



THE **IDEAL** SOLUTION

# BAR



# 500mm MODULAR STAINLESS UNITS

Bar

## Bar Preparation Sinks and Drainer



- Worktop**
- Stainless steel grade 304
  - 400x400mm bowl inset
  - 75mm splashback to rear
  - 50mm downturn to all sides
  - Tap holes fitted
  - Water retaining edge to front and sides

- Undershelf**
- Stainless steel 1.2mm thickness
  - 30mm downturn to all sides

- Leg**
- Stainless steel 30x30mm box section
  - c/w alloy adjustable, fitted feet

**Models** Single and double bowl units

**Dimensions** Single bowl = 600 / 800 or 1000x500x850mm high  
Double bowl = 1000 / 1200x500x850mm high

- Features**
- Stainless steel construction throughout
  - Single undershelf standard
  - Valance fitted to hide bowl / bowls

- Options**
- Right or left hand drainer
  - Bottle speed rail fitted to front
  - Infill panels to sides and rear

Prices in PRICE LIST page 24

## Ice Well



ice well with sliding top cover

- Worktop**
- Stainless steel grade 304
  - 300mm deep ice well inset (size dependant on unit length)
  - 75mm splashback to rear
  - 50mm downturn to front and sides

- Undershelf**
- Stainless steel 1.2mm thickness
  - 30mm downturn to all sides

- Well**
- 300mm deep insulated ice well (size dependant on unit length)
  - Outlet drain
  - Hinged insulated top cover (sliding optional)

- Leg**
- Stainless steel 30x30mm box section
  - c/w alloy adjustable, fitted feet

**Dimensions** 600 / 800 / 1000x500x850mm high

- Features**
- Stainless steel construction throughout
  - Single undershelf as standard
  - Valance fitted to hide ice well

- Options**
- 50/50 split sliding top cover with flush handle
  - Bottle speed rail fitted to front

Prices in PRICE LIST page 24

## Preparation Top



- Worktop**
- Stainless steel grade 304
  - Soundedened heavy duty worktop
  - 75mm splashback to rear
  - 50mm downturn to front and sides

- Undershelf**
- Stainless steel 1.2mm thickness
  - 30mm downturn to all sides

- Leg**
- Stainless steel 30x30mm box section
  - c/w alloy adjustable, fitted feet

**Dimensions** 400 / 600 / 800 or 1000x500x850mm high

- Features**
- Stainless steel construction throughout
  - Undershelf fitted as standard

- Options**
- Multiple undershelves
  - Knife drawer
  - Bottle speed rail
  - Infill panels to side and rear

Prices in PRICE LIST page 24

## Blender Station



- Worktop**
- Stainless steel grade 304
  - 400x400x250mm deep ice well / sink
  - 75mm splashback to rear
  - 50mm downturn to front and sides

- Front shelf**
- Blender shelf mounted to front of unit

- Undershelf**
- Stainless steel 1.2mm thickness
  - 30mm downturn to all sides

- Leg**
- Stainless steel 30x30mm box section
  - c/w alloy adjustable, fitted feet

**Dimensions** 600 or 800x500x850mm high

- Features**
- Stainless steel construction throughout
  - Single undershelf as standard
  - Valance fitted to hide ice well

- Options**
- Bottle speed rail

Prices in PRICE LIST page 24

# 500mm MODULAR STAINLESS UNITS

## Bar Cupboard / Waste Bin Housing



- Worktop**
- Stainless steel grade 304
  - Soundeadedened heavy duty worktop
  - 75mm splashback to rear
  - 50mm downturn to front and sides

- Under-shelves**
- Stainless 1.2mm thickness
  - 30mm downturn to all sides
  - Height adjustable / removable (please note undershelves removed for waste bin option)

- Leg**
- Stainless steel 30x30mm box section
  - c/w alloy adjustable, floor fitted feet

**Dimensions** 400 / 600 / 800 / 1000x500x850mm high

- Features**
- Stainless steel construction throughout
  - Infill panels to sides and rear
  - Magnetic hinged door with flush fitted handle
  - 2x Internal undershelves fitted as standard

- Options**
- Under worktop to become housing for removable waste bin (removal of shelves)
  - Lockable door
  - Scrapping hole cut into worktop

Prices in PRICE LIST page 25

## Bar Drawer Unit 3 Bank



- Worktop**
- Stainless steel grade 304
  - Soundeadedened heavy duty worktop
  - 75mm splashback to rear
  - 50mm downturn to front and sides

- Drawers**
- 200mm deep units, flush fitted handles
  - Telescopic drawer runners

- Leg**
- Stainless steel 30x30mm box section
  - c/w alloy adjustable, fitted feet

**Dimensions** 400 / 600 / 800 / 1000x500x850mm high

- Features**
- Stainless steel construction throughout
  - Infill panels to sides
  - 3x drawer unit as standard

- Options**
- Drawer inlay to accept gastro pans
  - Lockable drawers

Prices in PRICE LIST page 26

## Bar Mobile Bottle Bin



- Finish**
- Stainless steel grade 304
  - 1.5mm carcass

**Dimensions** 400 / 600x500x800mm high (to fit under 600 + 800 worktop units)

- Features**
- Stainless steel construction throughout
  - Heavy duty castors for easy manoeuvrability
  - Re-sealable drain outlet for cleaning

- Options**
- Bottle capper and tray fitted to unit front

Prices in PRICE LIST page 26

## Bar Corner Unit



- Worktop**
- Stainless steel grade 304
  - Soundeadedened heavy duty worktop
  - 75mm splashback to rear and sides
  - 50mm downturn to front and sides
  - Chamfered or right angled outer edge

- Under-shelves**
- Stainless 1.2mm thickness
  - 30mm downturn

- Leg**
- Stainless steel 30x30mm box section
  - c/w alloy adjustable, fitted feet

**Dimensions** 500mm corner unit x850mm high

- Features**
- Stainless steel construction throughout
  - Infill panels to sides and rear
  - 3x undershelves as standard

- Options**
- Wash hand basin 200mm diameter inset into worktop (1x undershelf to be omitted)

Prices in PRICE LIST page 26

# 500mm MODULAR STAINLESS UNITS

Bar

## Glasswash Basket Station



- Worktop**
- Stainless steel grade 304
  - 75mm splashback to rear
  - 50mm downturn to front and sides

- Trayslides**
- Stainless trayslides 1.5mm (4x pairs)
  - Pitch @ 160mm

- Leg**
- Stainless steel 30x30mm box section
  - c/w alloy adjustable, floor fitted feet

**Dimensions** 470 / 570x500x850mm high

- Features**
- Stainless steel construction throughout
  - 4x pairs runners to accept glasswash / dishwasher racks

- Options**
- Base shelf
  - Infill panels to sides and rear

Prices in PRICE LIST page 25

## Bar Wash Hand Basin



- Worktop**
- Stainless steel grade 304
  - 200mm diameter basin inset
  - Tap holes fitted
  - 75mm splashback to rear
  - 50mm downturn to front and sides

- Undershelf**
- Stainless 1.2mm thickness
  - 30mm downturn

- Leg**
- Stainless steel 30x30mm box section
  - c/w alloy adjustable, floor fitted feet

**Dimensions** 400x500x850mm high

- Features**
- Stainless steel construction throughout
  - Undershelf
  - Valance fitted to hide bowl

- Options**
- Extra undershelf
  - Infill panels to sides and rear

Prices in PRICE LIST page 25

## Glasswash Station



- Finish**
- Stainless steel grade 304

- Worktop**
- 250mm retaining upstand to sides and rear
  - Worktop sounddeadened

- Undershelf**
- Stainless 1.2mm thickness
  - 30mm downturn

**Dimensions** 500x500x850mm high

- Features**
- Cut-out to rear for water and electric supplies
  - Single undershelf standard
  - Sounddeadened top to eliminate glasswasher vibration
  - Retaining sides and back for machine stability

- Options**
- Various height options – customer preference
  - Runners underneath for dishwasher baskets
  - Infill panels to sides

Prices in PRICE LIST page 25

## Bar Drawer Unit Single Bank



- Worktop**
- Stainless steel grade 304
  - Sounddeadened heavy duty worktop
  - 75mm splashback to rear
  - 50mm downturn to front and sides

- Drawers**
- 200mm deep units, flush fitted handles
  - Telescopic drawer runners

- Undershelf**
- Stainless 1.2mm thickness
  - 30mm downturn

- Leg**
- Stainless steel 30x30mm box section
  - c/w alloy adjustable, fitted feet

**Dimensions** 400 / 600 / 800 / 1000x500x850mm high

- Features**
- Stainless steel construction throughout
  - Infill panels to sides
  - 1x drawer unit as standard
  - 1x undershelf as standard

- Options**
- Drawer inlay to accept gastro pans
  - Lockable drawers

Prices in PRICE LIST page 26

# MODULAR STAINLESS BAR UNITS – ACCESSORIES

## Bar Service Frame

**Finish** ■ Stainless steel 30x30mm box section

**Dimensions** 600 / 800 and 1000mm lengths 900mm standard height

**Features** ■ Robust design  
 ■ Adjustable alloy fitted feet  
 ■ Designed to be used to fit shopfitted bar top and frontage  
 ■ Beverage 'python' pipe system to be cradled within frame  
 ■ Bar units to be fitted up to frame

Prices in PRICE LIST page 27



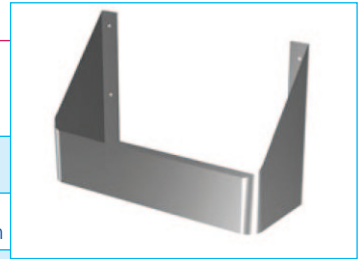
## Speed Rail

**Finish** ■ Stainless steel grade 304

**Dimensions** 400 / 600 / 800 + 1000mm length

**Usage** ■ Designed for storage of hand poured optic bottles  
 ■ Can be fitted to any bar serve unit

Prices in PRICE LIST page 27



## Drainer + Plain Bridging Tops

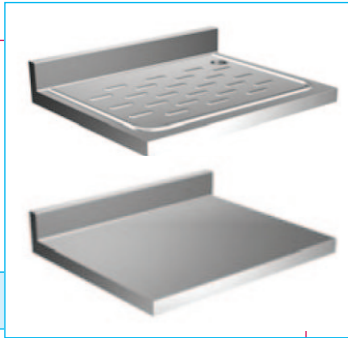
**Finish** ■ Stainless steel grade 304

**Dimensions** 400 / 600 / 800 + 1000mm

**Worktop** ■ 75mm upstand to rear  
 ■ Water retaining edge on drainer version  
 ■ Sounddeadened  
 ■ 50mm downturn to all sides

**Usage** ■ Designed to be used suspended between 2x bar serve units

Prices in PRICE LIST page 27



## Condiment Unit

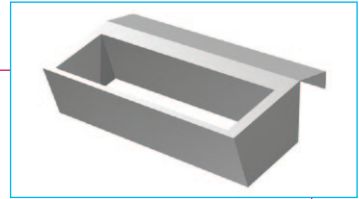
**Finish** ■ Stainless steel grade 304

**Dimensions** 350mm and 525mm

**Features** ■ Supplied with compliment of st/st gastro pans to suit

**Usage** ■ Designed for storage of drink garnishes i.e lemon slices / cherries etc  
 ■ Can be fitted to splashback of any bar serve preparation unit

Prices in PRICE LIST page 27



## Corner Top 500x500mm

**Finish** ■ Stainless steel grade 304

**Dimensions** 500x500mm

**Worktop** ■ 75mm upstand to rear  
 ■ Sounddeadened  
 ■ 50mm downturn to all sides

**Usage** ■ Designed to be used between 2x bar serve units in corner situations

**Options** ■ Inset hand wash basin (as shown above)

Prices in PRICE LIST page 27

